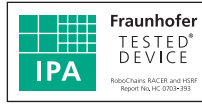


HSRF 2538

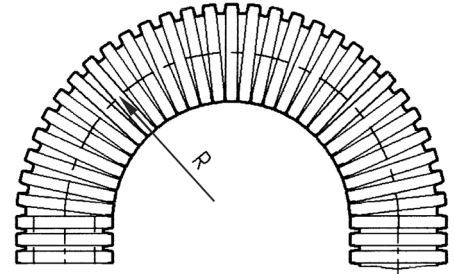


Order Example (주문예)

HSRF 2538 1000L A+B 3SETS
 Type Length Brackets Q'ty

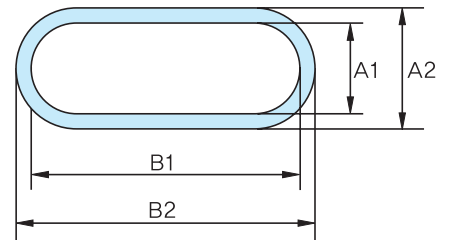
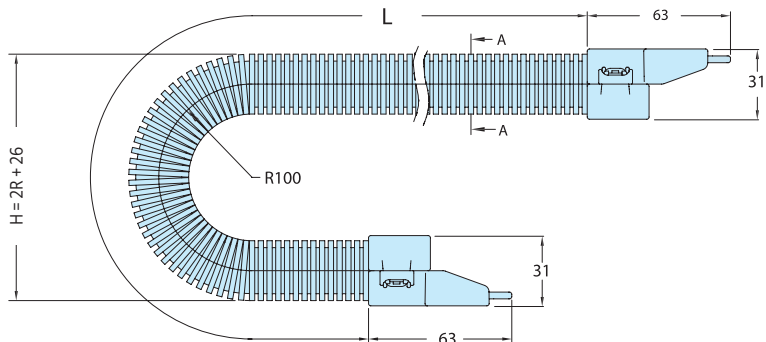
→ stat. R
 lowest recommended bending radius for static (fixed) installation.

→ dyn. R
 lowest recommended bending radius for dynamic (flexible) installation.

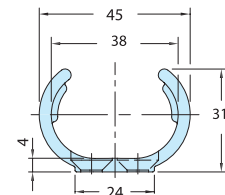
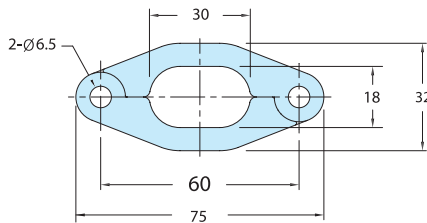
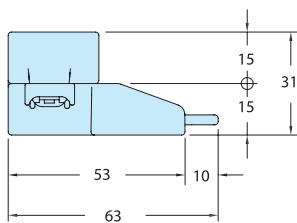
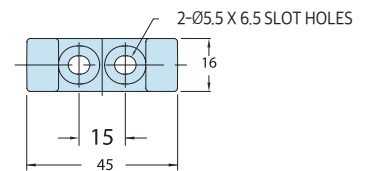
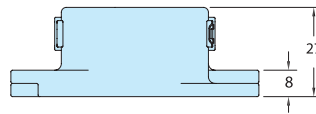
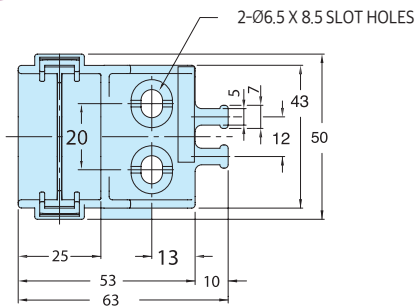


star.R	dyn.R	A1	A2	B1	B2
40	100	18	26	30	38

RoboFlex



Brackets



A TYPE

B TYPE

MIDDLE TYPE